

Boston Alternative Energy Facility

Project Update – Webinar

August 2020
Project related

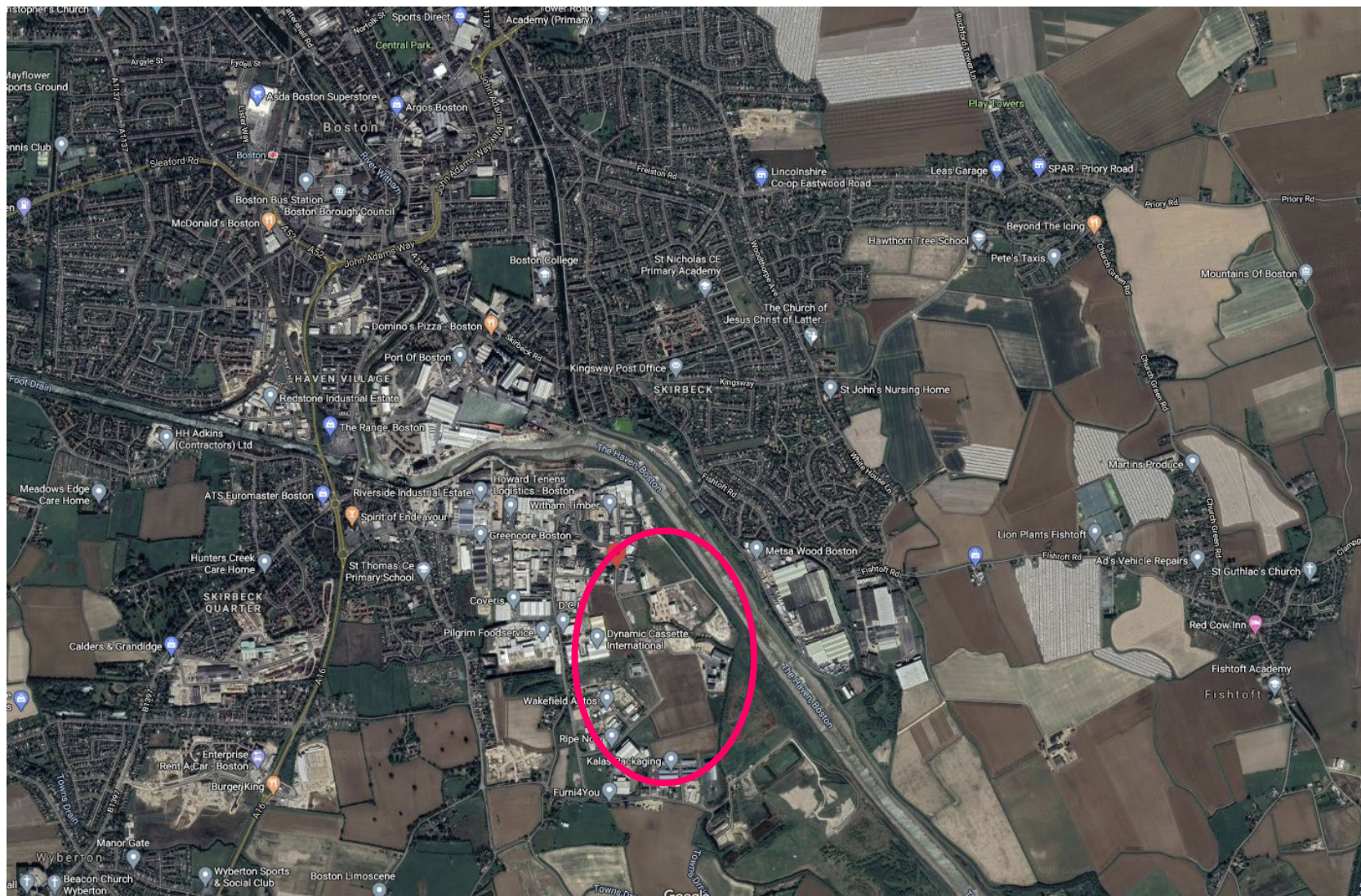


Boston Alternative Energy Facility – changes

Discussion points:

- Project technology changes:
 - Construction
 - RDF supply
 - RDF offloading and storage
 - RDF pre-processing
 - Thermal technology
 - Other changes, including Carbon capture
- Consultation
- Impact on timescale







Construction

Key changes

- Concrete batching plant on-site
- Early part of wharf constructed to allow aggregate delivery by ship
- Temporary aggregate conveyor
- Significant reduction in concrete requirements by loss of silos

Likely effect:

- Significant reduction to construction traffic
- New ship movements required during construction to offset deliveries by vehicle

Unchanged

- Approximate length of construction 46-48 months
- Type/Amount of mobile plant and equipment

RDF supply

Key changes

- Change to supplier
- Bales likely to vary in size from different departure points (but will be the same on each shipment)

Likely effect

- Fewer ships required because the worst-case maximum supply quantity is reduced from 1.5Mtpa to 1.2Mtpa
- Wider access to more UK ports

No change: source is processed municipal waste, so will have been pre-screened prior to supply

No anticipated change to required RDF specification

BUT - EfW technology is more tolerant of Calorific Value variability and RDF composition compared to gasification

RDF handling (wharf)

Key changes

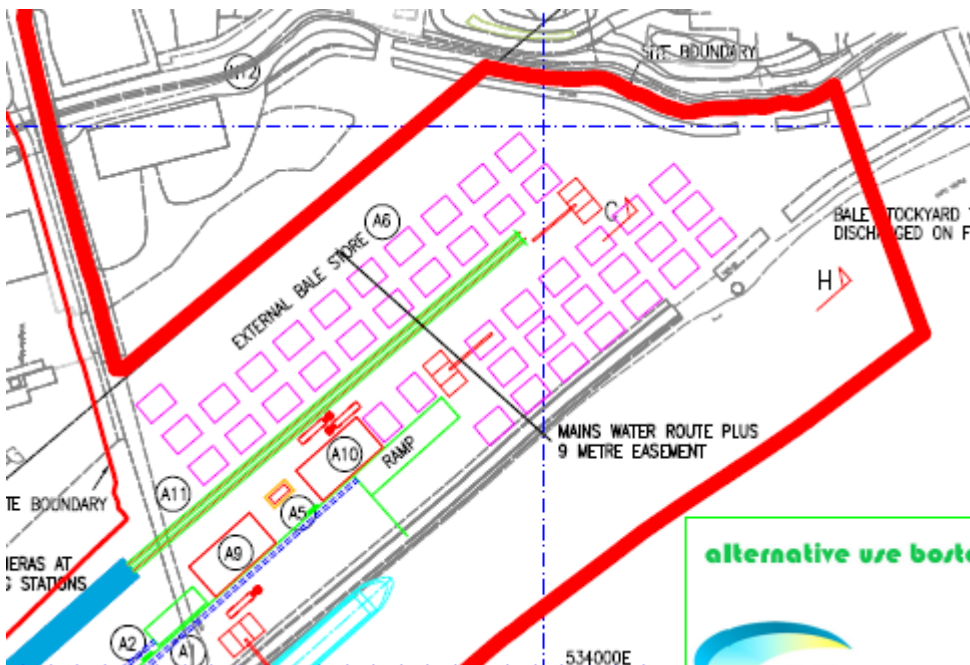
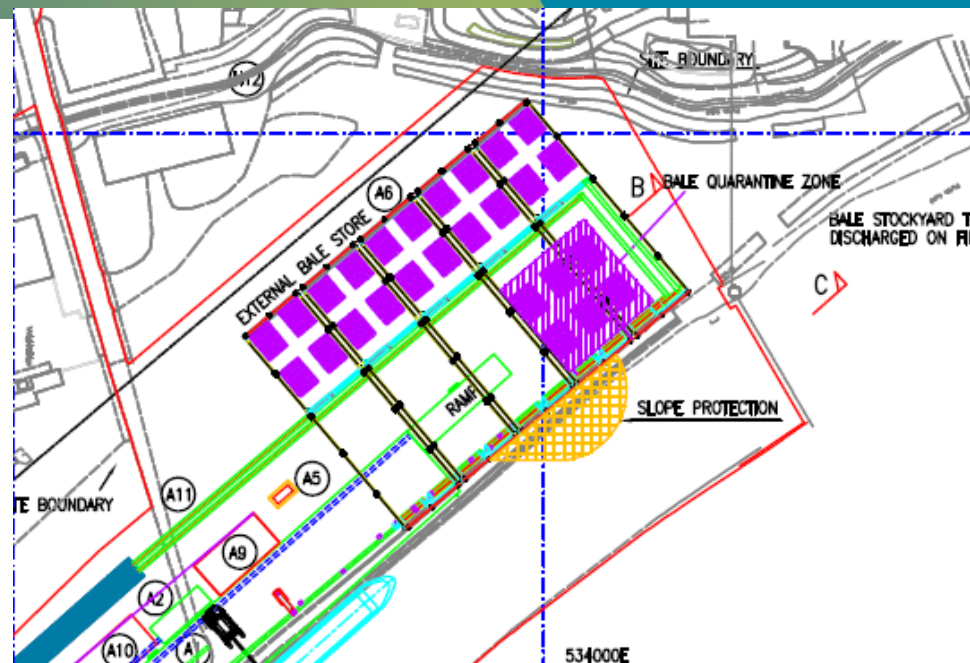
- Two cranes per berth
- Greater automation
- Conveyors directly from wharf side to bale shredder/bunker – minimising amount required for storage @wharf
- Amended redline at the wharf storage area

Likely effect

- Less space required for storing RDF bales
- Increased efficiency and speed in removing bales from ships

No change:

- Two berths for RDF; one berth for aggregate
- Dredged area remains the same



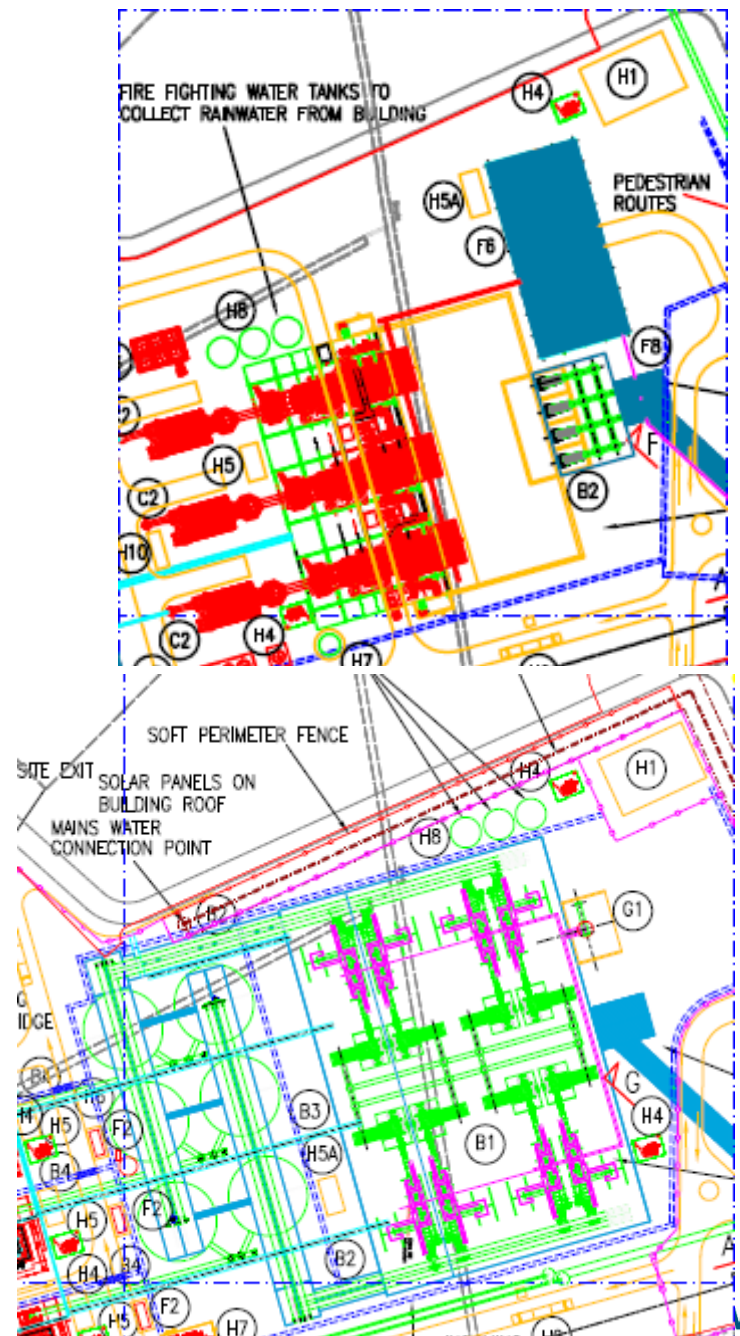
RDF pre-processing

Key changes

- No large RDF shredding facility
- No silos required for processed RDF
- No segregation of metals, inerts from RDF for recycling

Likely effect

- More space required for distributing plant around the site – offers opportunities for optimising layout
- Reduced concrete
- Reduced HGVs



Thermal treatment - EfW

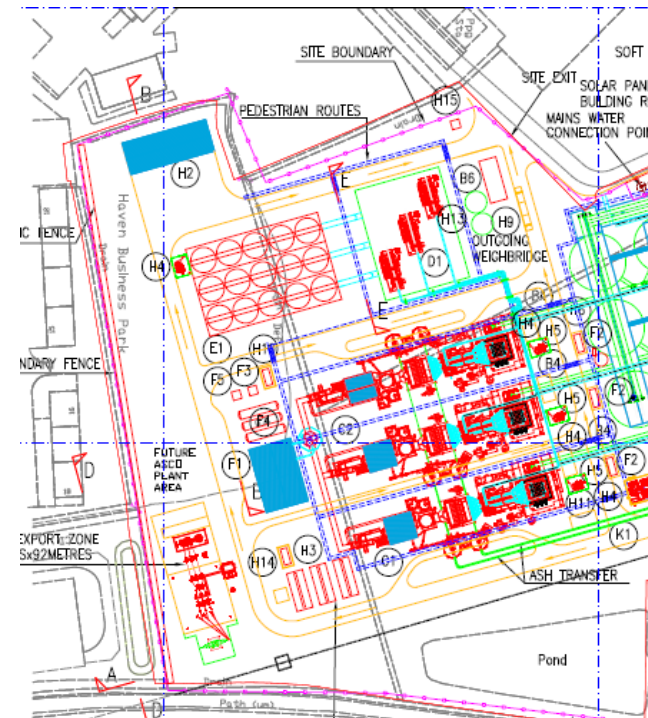
Key changes

- EfW
- ACC / Turbines moved to centre of site
- More ash processing
- Increased number of CO₂ capture units from one to two
- Increased lightweight aggregate production (more ash)
- Amended redline at southern boundary

No change – emissions will have to be compliant with new Waste incineration BREF Dec 2019.

Likely effect

- Less compact layout (simplifies construction)
- Increased ash processing
- Greater CO₂ capture, reduce CO₂ emissions
- More lightweight aggregate, therefore will slightly increase ship numbers (but overall net reduction in shipping)



Thermal treatment - EfW

Key changes

- Three separate stacks
- Taller plant
- More enclosed building



Likely effect

- Noise (TBC)
- Landscape and visual

No proposed changes to turbine technology / ACC technology / power export (still 80MWe)



Footbridge

Key changes

- Footbridge

Likely effect

- Footbridge means increased pedestrian safety, but will have heritage impact to Sea Bank footpath

Gap in the Sea (Roman) Bank
Footbridge will span the gap



Consultation

Consideration:

- Interaction with Stakeholders required
- Changes largely positive (from an impact perspective) from PEIR (which represents previous worst-case position)
- Some topic chapters are not affected

Proposed:

- Informal consultation to notify stakeholders about the **changes**
- No amendment to Statement of Community Consultation required
- Summary of changes sent to key stakeholders
- 28 day opportunity for consideration and questions
- Webinar / teleconference with stakeholders
- Public informed by update to external website, direct email to subscribers, maildrop

Boston Alternative Energy Facility – timescale

- Scheme changes confirmed and design freeze implemented – June ✓
- Maildrop newsletter and website being prepared for consultation in July ✓
- Delivery of newsletter by Royal Mail commenced end-July ✓
- Consultation to formally start 10 August 2020 ✓

- Environmental Statement updated and completed (October 2020)
- DCO Programme is being updated accordingly
 - Current anticipated consent application submission **early-Q4 2020**
 - Third party comments could influence this (but considered unlikely)

Thank you for your time

- **Any Questions?**